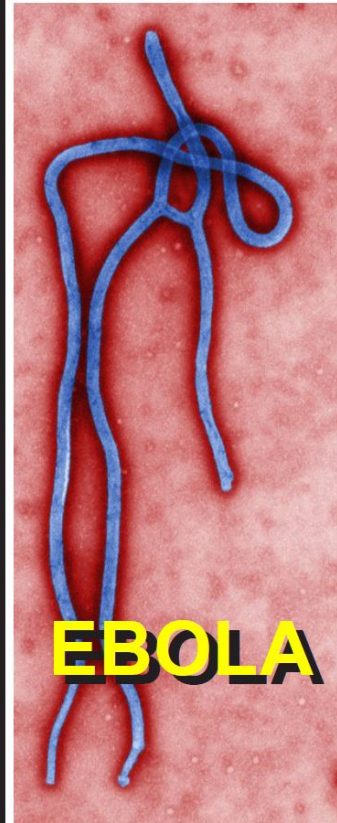




Patient Safety



Medical
Devices



Quality =
Nurses / Patients



Patient Safety & Healthcare Transparency

Health Watch USAsm 2015 Patient Safety Conference

Disclaimer

- All information presented at this conference is the express opinion of the presenters, moderators and/or participants regarding various subjects of healthcare policy, patient engagement, value purchasing and healthcare utilization. We strive to make this conference an informative event and welcome your input.





Healthcare Transparency & Patient Safety

Kentucky 42nd in the Nation For Healthcare

Nov. 13, 2015 Four-Points Sheraton, Lexington, Kentucky



- Conference Home
- Download Brochure
- Agenda & Speakers
- Registration
- Facilities



Kentucky 42nd in the Nation for Healthcare

Source: The Commonwealth Fund

Full Disclosure and Healthcare Associated Infections

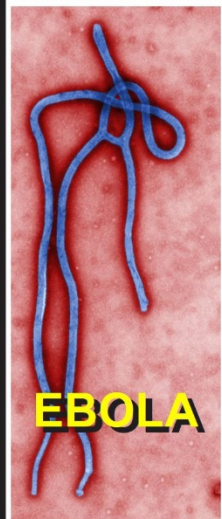
November 13th, 2015
Registration Open at 7:30 am

[Download Goals and Objectives](#) [CLE Objectives](#)

Schedule Times May Change Depending Upon Speaker Travel Requirements

Introduction	Kevin Kavanagh, MD MS,	8:30 - 8:45 am
Patient Advocacy and Personal Stories		8:45 - 10:15 am
Introduction	Daniella Nunez - Cosumer Union	
Healthcare Oversight	David Antoon	
Medical Devices	Joleen Chambers	
	Break	10:15 - 10:30 am
Ebola - Introduction	Joycelyn Elders, MD	10:30 - 10:40 am
1) Safety of Nurses Treating Infectious Disease	Cokie Giles RN	10:40 - 11:02 am
2) Failures in Risk Communication to the Public with Ebola.	Kaci Hickox, RN, MPH	11:02 - 11:25 am
3) The Lexington Ebola Experience	Rice Leach, MD, MSHSA	11:25 - 11:45 pm
4) Discussion -- Infectious Disease Preparedness	Elders, Giles, Hickox, Leach	11:45 - 12:15 pm
	Lunch	12:15 - 1:00 pm
Assurance of Medical Device Quality	Peter Eisler	1:00 - 1:45 pm
Update on CMS Value Purchasing	Richard Wild, MD, JD	1:45 - 2:30 pm
Kentucky's Regulation for Reporting of Dangerous Infections	Kraig Humbaugh, MD, MPH	2:30 - 3:00 pm
	Break	3:00 - 3:15 pm
Medical Device Safety & The 21st Century Cures Act	Steve Tower, MD	3:15 - 3:45 pm
How We Measure Urinary Catheter Infections	Mara Rice, RN	3:45 - 4:15 pm
The Importance of the Microbiome (Good Bacteria) in Maintaining Health	Daniel Saman, DrPH, MPH, CPH	4:15 - 4:45 pm
Conference Summary	Marvin Feit, PhD	4:45 - 5:00 pm

Patient Safety



Medical Devices



**Quality =
Nurses / Patients**





Faculty Disclosure Statement:

All planners, speakers, authors, reviewers, and staff members involved with content development for continuing education activities sponsored by the Southern Kentucky Area Health Education Center (AHEC) are expected to disclose any real or perceived conflict of interest related to the content of the activity.

Detailed disclosures will be included in participant materials or given prior to the start of the activity.

At the time of production, all individuals involved, disclosed that they have nothing to disclose.

Disclaimer:

Southern Kentucky Area Health Education Center (AHEC) presents this activity for educational purposes only. Participants are expected to utilize their own expertise and judgment while engaged in the practice of medicine. The content of the presentation is provided solely by presenter(s) who have been selected for presentations because of recognized expertise in their field.

No relevant disclosures identified



The Southern Kentucky Area Health Education Center is accredited by the Kentucky Medical Association (KMA) to provide continuing medical education for physicians.

The Southern Kentucky Area Health Education Center designates this continuing medical education activity for a maximum of six and .25 (6.25) credits in *AMA PRA Category 1 Credit(s)*[™]. Physicians should only claim credit commensurate with the extent of their participation the educational activity.

All persons participating in continuing medical education programs sponsored by the Southern AHEC are expected to disclose any real or perceived conflict of interest related to the content of their presentations.

The Southern Kentucky AHEC office of Continuing Medical Education presents this activity for educational purposes only. Participants are expected to use their own expertise and judgment while engaged in the practice of medicine.

The content of the presentation is provided solely by presenters who have been selected for presentations because of recognized expertise in the field