



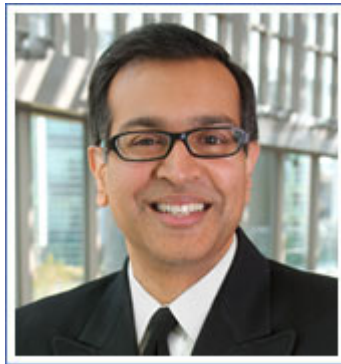
Health Watch USAsm Newsletter

www.healthwatchusa.org April 12th, 2013

Member of the National Quality Forum and a designated "Community Leader" for Value-Driven Healthcare by the U.S. Dept. of Health and Human Services

Patient Medicare HCAHPS Survey Data is Predictive of Rates of Central Line Blood Stream Infections.

"This study bolsters the evidence that patient surveys may be a useful surrogate to predicting the incidence of hospital acquired conditions, including CLABSIs. Moreover, our study found that poor staff responsiveness may be indicative of greater hospital problems and generally poorly performing hospitals; and that this finding may be a symptom of hospitals with a multitude of problems, including patient safety problems, and not a direct cause." Because HCAHPS Surveys are facility wide and the CLABSI data is only from the ICU, the strong correlation which was found may indicate that facilities with high rates of CLABSI may have other problems with patient safety and a poor culture of safety. Study from Health Watch USA and Essentia Institute of Rural Health. PLoS One, Apr. 5, 2013. FREE ACCESS <http://www.plosone.org/article/info:doi/10.1371/journal.pone.0061097>



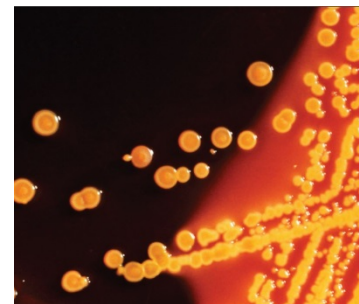
Jack Pattie Show on April 23rd to be Devoted to Healthcare Associated Infections.

Guests will be Arjun Srinivasan (pictured on left), Associate Director for Healthcare Associated Infection Prevention Programs, Centers for Disease Control and Dr. Kevin Kavanagh, Board Director of Health Watch USA.

Listen to the Show on April 23rd from 9:00 am to 10:00 pm on 590 AM WVLK or listen via the Web at: <http://www.wvlkam.com/> (Click Button on Upper Right Hand Corner of Screen)

Request Sent to Governor to Make Reporting of the Deadly Super-Bug CRE Mandatory in Kentucky.

In Response to the Courier Journal Article by Laura Ungar, which described approximately 20 cases of CRE in Louisville Hospitals Alone, The Chairman of the Kentucky House Committee on Health and Welfare, Tom Burch, has requested that Kentucky Governor Steven Beshear change Kentucky Health Department Regulations to Make CRE disease a mandatory reportable event.



Courier Journal Article - A Call for Mandatory Reporting of CRE in Kentucky.
<http://www.courier-journal.com/apps/pbcs.dll/article?AID=2013304110078>

View Representative Tom Burch's Letter: [http://www.healthwatchusa.org/publications/2013-Documents/20130405-Rep Tom Burch to Governor Beshear-CRE Request%20 for Required Reporting.pdf](http://www.healthwatchusa.org/publications/2013-Documents/20130405-Rep_Tom_Burch_to_Governor_Beshear-CRE_Request%20for_Required_Reporting.pdf)

View May 23, 2013 Courier Journal Article on CRE: <http://www.courier-journal.com/article/20130323/PRIME01/303240037/Deadly-bacteria-hitting-Louisville-hospitals-long-term-care-facilities>

Illinois Representative Patricia Bellock submitted a resolution in the Illinois House to raise awareness regarding CRE:
<http://www.ilga.gov/legislation/BillStatus.asp?DocNum=221&GAID=12&DocTypeID=HR&LegId=76030&SessionID=85&GA=98>

CRE is on the Rise. The percentage of outpatient Klebsiella Cultures which are CRE Positive has risen from 0.1% to 4.5%. <http://www.ncbi.nlm.nih.gov/pubmed/23388360>

What NIH had to do To Control a CRE Infection.

http://www.huffingtonpost.com/2012/08/22/klebsiella-pneumoniae-superbug-nih-clinical-center-deadly_n_1822695.html

New Research Indicates that Patient's With Symptoms of C. Difficile Should be Isolated While Awaiting Culture Results.

The current guidelines only recommends isolation for all patients with culture proven C. Difficile.
<http://www.ncbi.nlm.nih.gov/pubmed/23388367>

Hospitals Fail to Take Simple Steps to Prevent C. Difficile.

According to a recent APIC survey, "only 77 percent of survey respondents had a policy of promoting soap-and-water hand washing when caring for C. diff–infected patients, and only 10 percent had policies requiring sick patients to wash their hands with soap and water";
"only 67 percent of respondents have a firm daily-bleaching policy in place at their facilities."

Nearly half of Hospital Infections in Germany are viewed as Avoidable.

http://www.thelocal.de/national/20130407-48975.html?goback=.gde_4191258_member_229993608#.UWMB0leNAwc

Are Antibiotics In Our Meat Breeding Superbugs?

<http://onpoint.wbur.org/2013/04/04/antibiotics-and-meat>

Possible spread of MRSA from Livestock to Humans.

<http://www.ncbi.nlm.nih.gov/pubmed/23526809>

Aetna Opposes Investor-Owned ERs as \$1,500 Fees Charged.

Facility Fees Run High <http://www.bloomberg.com/news/2013-04-01/aetna-opposes-investor-owned-ers-as-1-500-fees-charged.html>

Large Increase in Insurance Premiums are Predicted by Health Insurance Companies.

In order for them to increase premiums they have to be buying more expensive healthcare.
<http://online.wsj.com/article/SB10001424127887324557804578374761054496682.html>

Death Rates Rise at Critical Access Hospitals.

<http://www.usatoday.com/story/news/nation/2013/04/02/death-rates-rise-at-remote-hospitals/2048047/>

***Call For Papers -- Health Watch USAsm
Nov. 1, 2013 Patient Safety Conference***

Submit a 250 Word Abstract on Patient Safety
to healthwatchusa@gmail.org

Four papers will be selected for a 35 min presentation
For more information go to: www.healthconference.org

Deadline May 15th, 2013

Visit and "Like" HW USA's Face Book Page at:

<https://www.facebook.com/HealthWatchUsa>



To Subscribe to this Newsletter Go To: Z

<http://www.hwusa-newsletter.org/lists/?p=subscribe&id=1>



**This Newsletter is the Express Opinion of its Authors and
Health Watch USASM**