



Health Watch USAsm Newsletter

www.healthwatchusa.org May 15th, 2013

Member of the National Quality Forum and a designated "Community Leader" for Value-Driven Healthcare by the U.S. Dept. of Health and Human Services

Lexington Herald Leader Posts Area Hospital Ratings.



In a joint project with Health Watch USA, the ratings of regional hospitals from the Leapfrog Group, Consumer Reports, US News & World Report, the Centers for Medicare and Medicaid Services (CMS), The Joint Commission, Nurse Magnet Accreditation and CMS Substantiated Investigations has been posted on www.kentucky.com (The Herald Leader Website).

Read the accompanying Op-Ed: <http://www.kentucky.com/2013/05/12/2637120/ky-voices-tough-diagnosis-hospital.html>

Go To area hospital rankings:

<http://media.kentucky.com/smedia/2013/05/10/10/32/GbmaR.So.79.pdf>

MEDICAL NEWS
The business of healthcare

Widespread panic
What happens when "nightmare bacteria" becomes a reality? Kentucky finds out.

Starting off essential items
Each case of CRE when passed or spread from one individual to another is a concern for the family because of the high costs of treatment.

Special Legal Section
APRIL 2013
This is a special section of our newsletter containing the APRIL 2013 legal and business news.

Pay or play?
No matter your political view or personal opinion on the regulation, it is certain that business leaders have an inkling of what is to come in the near future.

ObamaCare's burden
promotes to Kentucky
Some think ObamaCare's impact on the health care industry will be devastating for the state.

ABOUT THIS ISSUE
Life Sciences & Pharmaceuticals

Articles begin on page 13

What Happens When a "Nightmare Bacteria" becomes a Reality ? Kentucky finds out.

An article published in Medical News - The Business of Healthcare, updating information regarding the CRE outbreak in Kentucky. Health Watch USA is prominently featured in this article. Download the article (6 MB) using the link below:

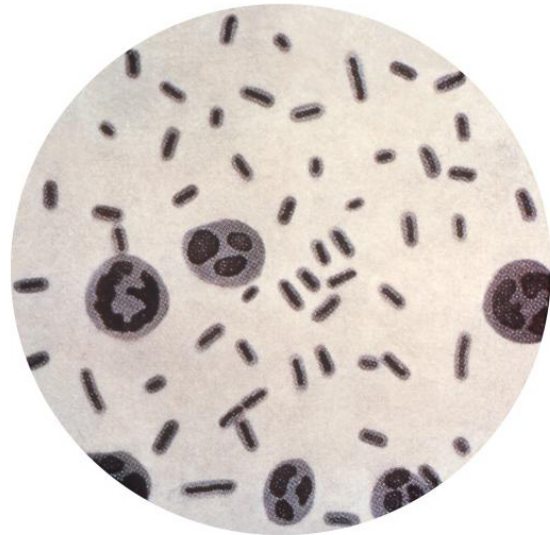
http://www.medicalnews.md/wp-content/uploads/2013/05/MN_May_2013_web.pdf

“Nightmare” Bacteria on the Rise in US Hospitals, Long-term Care Facilities

An Urgent Threat: Are we entering into a post-antibiotic era? Thomas Frieden, MD, MPH (Director CDC): "We only have limited opportunity to stop these bacteria from spreading into the community."

<http://jama.jamanetwork.com/article.aspx?articleid=1679394>

The picture on the right is Klebsiella Bacteria in the bloodstream. This is one of the types of bacteria which can become resistant to carbapenem antibiotics.



Deadly CRE Infection Spreading Fast in Hospitals

<http://www.healthleadersmedia.com/content/QUA-291756/Deadly-CRE-Infection-Spreading-Fast-in-Hospitals>

Targeted Surveillance Can Reduce C. Difficile

"Screening patients with risk factors (48% participants) would identify 74% (95% CI: 55%-88%) of CD carriers."

<http://www.ajicjournal.org/article/S0196-6553%2812%2901303-X/fulltext>

<http://www.fiercehealthcare.com/story/targeted-screening-can-reduce-spread-c-diff-infection/2013-05-03>

Hospitals See Surge in Superbug

<http://finance.yahoo.com/news/hospitals-see-surge-superbug-fighting-063400543.html>

New Jersey Hospitals Achieve Improvements in Adverse Events and Infections

http://www.sacbee.com/2013/04/30/5383208/nj-hospitals-achieve-significant.html?goback=.gde_4191258_member_237057415

The State of Maine Releases Their 2013 Healthcare Acquired Infection Report

http://www.dirigohealth.maine.gov/Documents/HAI_report_2013.pdf

U.S. to Delete Data on Life-Threatening Mistakes From Website

<http://www.bloomberg.com/news/2013-05-02/u-s-to-delete-data-on-life-threatening-mistakes-from-website.html>

Is Hospital Safety The Patient's Responsibility or the Hospitals?

<http://www.aic.com/news/news/hospital-safety-your-responsibility-or-theirs/nXZbT/>

Health Watch USA joins with the Association for Professionals in Infection Control and Epidemiology (APIC), the Council of State and Territorial Epidemiologists (CSTE), and the Society for Healthcare Epidemiology of America (SHEA) to Request Full Funding of the NHSN (National Healthcare Safety Network)

<http://www.fiercehealthit.com/story/coalition-wants-more-funding-infection-control-tracking-system/2013-05-09>

Read Letters: Letter to US House and Senate Subcommittee:

http://www.healthwatchusa.org/publications/2013-Documents/NHSN_Support_Letter_LHHSED-5_6_13.pdf

Letter to Full Committee http://www.healthwatchusa.org/publications/2013-Documents/NHSN_Support_Letter_Full_Committee-5_6_2013.pdf

CDC Home
CDC Centers for Disease Control and Prevention
CDC 24/7: Saving Lives. Protecting People.™

A-Z Index [A](#) [B](#) [C](#) [D](#) [E](#) [F](#) [G](#) [H](#) [I](#) [J](#) [K](#) [L](#) [M](#) [N](#) [O](#) [P](#) [Q](#) [R](#) [S](#) [T](#) [U](#) [V](#) [W](#) [X](#) [Y](#) [Z](#) <#>

Healthcare-associated Infections (HAI)

What You Can Do:

- [Sign up](#) for email updates on HAI
- [Join the conversation](#) at CDC's Safe Healthcare Blog
- [Be a Safe Patient](#)

CRE: Lethal Germs
Rapid action is needed to stop CRE infections
[Learn More >](#)



< 1 2 3 >

An End to Medical Billing Secrecy ?

Health and Human Services Secretary Kathleen Sebelius is announcing a groundbreaking initiative that will take a lot of the secrecy out of hospital billings.

<http://swampland.time.com/2013/05/08/an-end-to-medical-billing-secrecy/>



Costs for Same Procedure Vary Widely at Louisville Hospitals

<http://www.courier-journal.com/article/20130508/BETTERLIFE05/305080118>

"Inpatient costs related to joint replacement ranged from \$5,300 at a hospital in Ada, Okla., up to a high of \$223,000 at a hospital in Monterey Park, Calif."

<http://www.kentucky.com/2013/05/08/2632852/prices-for-hospital-care-vary.html>

<http://www.washingtonpost.com/blogs/wonkblog/wp/2013/05/08/one-hospital-charges-8000-another-38000/>

Download Data File (13.5 MB): http://www.healthwatchusa.org/publications/2013-Documents/Medicare_Provider_Charge_Inpatient_DRG100_FY2011.xlsx

Cost Consideration in the Clinical Guidance Documents of Physician Specialty Societies in the United States

"Slightly more than half of the largest US physician societies explicitly consider costs in developing their clinical guidance documents"

<http://www.ncbi.nlm.nih.gov/pubmed/23649494>

HW USA's Next Meeting on May 15th 2013 from 7:00 pm to 9:00 pm.



Speakers will include Rosemary Gibson renowned author of the Battle Over Health Care; and Dr. Gerald Hickson Dr. Gerald Hickson (pictured to the left) from the Vanderbilt Univ. Medical Center (Assistant Vice Chancellor for Health Affairs) and the Center for Patient and Professional Advocacy. His research has focused on understanding why families file suit, why certain physicians attract a disproportionate share of malpractice claims, and how to develop strategies for identifying and intervening on high malpractice claims physicians.

You can connect to the meeting using your computer through Adobe Connect. Registered and accepted guests may enter the meeting room using Adobe Connect. Speaker presentations will be in the first hour of the meeting.

If you wish to attend this meeting, please contact Health Watch USA at healthwatchusa@gmail.com

Call For Papers

***Health Watch USAsm
Nov. 1, 2013 Patient
Safety Conference***



**Submit a 250 Word Abstract on Patient Safety
to healthwatchusa@gmail.org**

Four papers will be selected for a 30 min presentation
For more information go to: www.healthconference.org

Deadline May 15th, 2013

**Visit and "Like" HW USA's Face Book Page at:
<https://www.facebook.com/HealthWatchUsa>**



**To Subscribe to this Newsletter Go To:
<http://www.hwusa-newsletter.org/lists/?p=subscribe&id=1>**



**This Newsletter is the Express Opinion of its Authors
and Health Watch USASM**