

Frontline Workers: A Global Perspective



**Frontline Worker Safety
in the Age of COVID-19**
Health Watch USAsm



Webinar Sept. 14th, 2022 - Registration Now Open

<https://healthconference.org>

Evaluation of science advice during the COVID-19 pandemic in Sweden

Nele BRUSSELAERS, MD PhD MSc
Clinical Epidemiologist

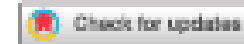


Global Health Institute, Antwerp University, Belgium

Centre for Translational Microbiome Research, Karolinska Institutet, Sweden

Focus on 2020!

ARTICLE



<https://doi.org/10.1057/s41599-022-01097-5>

OPEN

Evaluation of science advice during the COVID-19 pandemic in Sweden

Nele Brusselaers^{1,2,3,4}, David Steadson⁵, Kelly Bjorklund^{6,7}, Sofia Breland⁸, Jens Stilhoff Sørensen^{4,9}, Andrew Ewing^{4,10}, Sigurd Bergmann^{4,11} & Gunnar Steineck^{4,12}



ESCAPE

Evaluation of Science Advice in a Pandemic Emergency



Home About Project Teams Partners Publications Resources News Blog Contact

- Canada: in press
- Chile: in press
- Ghana: in press
- North Carolina: in press
- Hong Kong: in press
- Israel: in press
- **Italy: published**
- Japan: in press
- Netherlands: in press
- **Sweden: published**
- USA: to be completed this fall
- **Philippines: published**



The Swedish EScAPE team



- Nele Brusselaers, MD, Prof. Clinical Epidemiology – Karolinska Institutet/Antwerp University



- Jens S Sörensen, Lecturer in Peace and Development Studies / International Relations.



- David Steadson, Epidemiologist



- Andrew Ewing, Prof. Analytical Chemistry, Gothenburg University



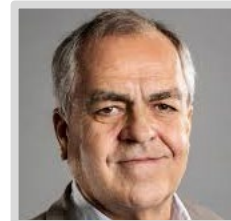
- Kelly Bjorklund, Human rights journalist



- Sigurd Bergmann, Em. Prof. Theology



- Sofia Breland, MD, General practitioner



- Gunnar Steineck, MD, Prof. Cancer Epidemiology, Gothenburg University

Coronavirus pandemic in the Nordic countries: Health policy and economy trade-off

Furqan B Irfan^{1,2}, Raoul Minetti³, Ben Telford⁴, Fahad S Ahmed⁵, Ayesha Y Syed⁶, Nick Hollon⁴, Seth C Brauman⁴, William Cunningham¹, Mohamed E Awad⁴, Khaled J Saleh⁴, Akbar K Waljee^{7,8}, Nele Brusselsaers^{9,10}

Background Countries making up the Nordic region – Denmark, Finland, Iceland, Norway, and Sweden – have minimal socioeconomic, cultural, and geographical differences between them, allowing for a fair comparative analysis of the health policy and economy trade-off in their national approaches towards mitigating the impact







shutterstock.com · 1547854916

Definition of **polycymaking noun** from the Oxford Advanced Learner's Dictionary

polycymaking *noun*

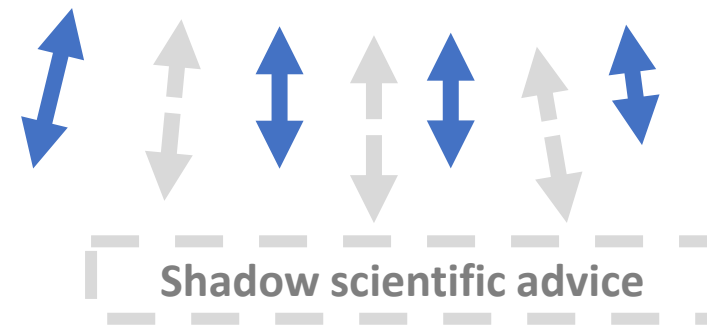
★ the process of developing plans of action for a political party, business, etc.



World Health Organization



© Léa Coolor



Folkhälsomyndigheten
PUBLIC HEALTH AGENCY OF SWEDEN

Who is most affected by this pandemic?!?

Healthcare



©DESIGNALIKIE

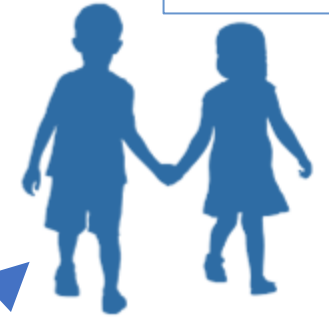
The healthcare personnel



Society



The children



The vulnerable



Economy



The older



The young and healthy



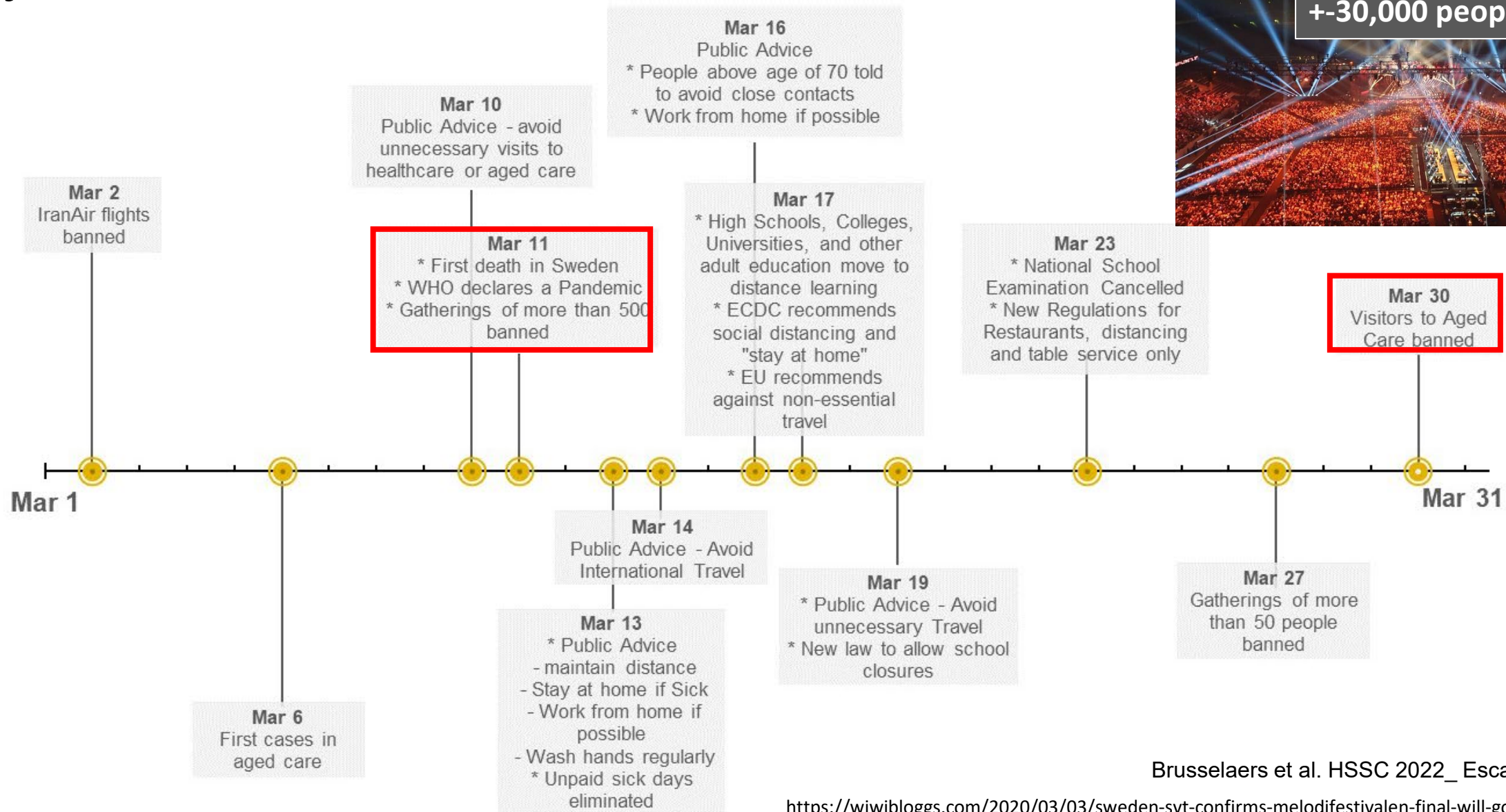
Some well-established key scientific facts about Covid-19



- Mainly an airborne infection
- Pre-symptomatic/asymptomatic spread
- Children can become infected and ill, and transmit it
- Schools can be transmission vectors – as any indoor crowded place
- Face masks limit spread of airborne infections
- Long-Covid, and Covid-19 related organ damage
- Covid-19 herd-immunity does not work – especially not without vaccines
- Testing is helpful to prevent transmission AND to predict healthcare need

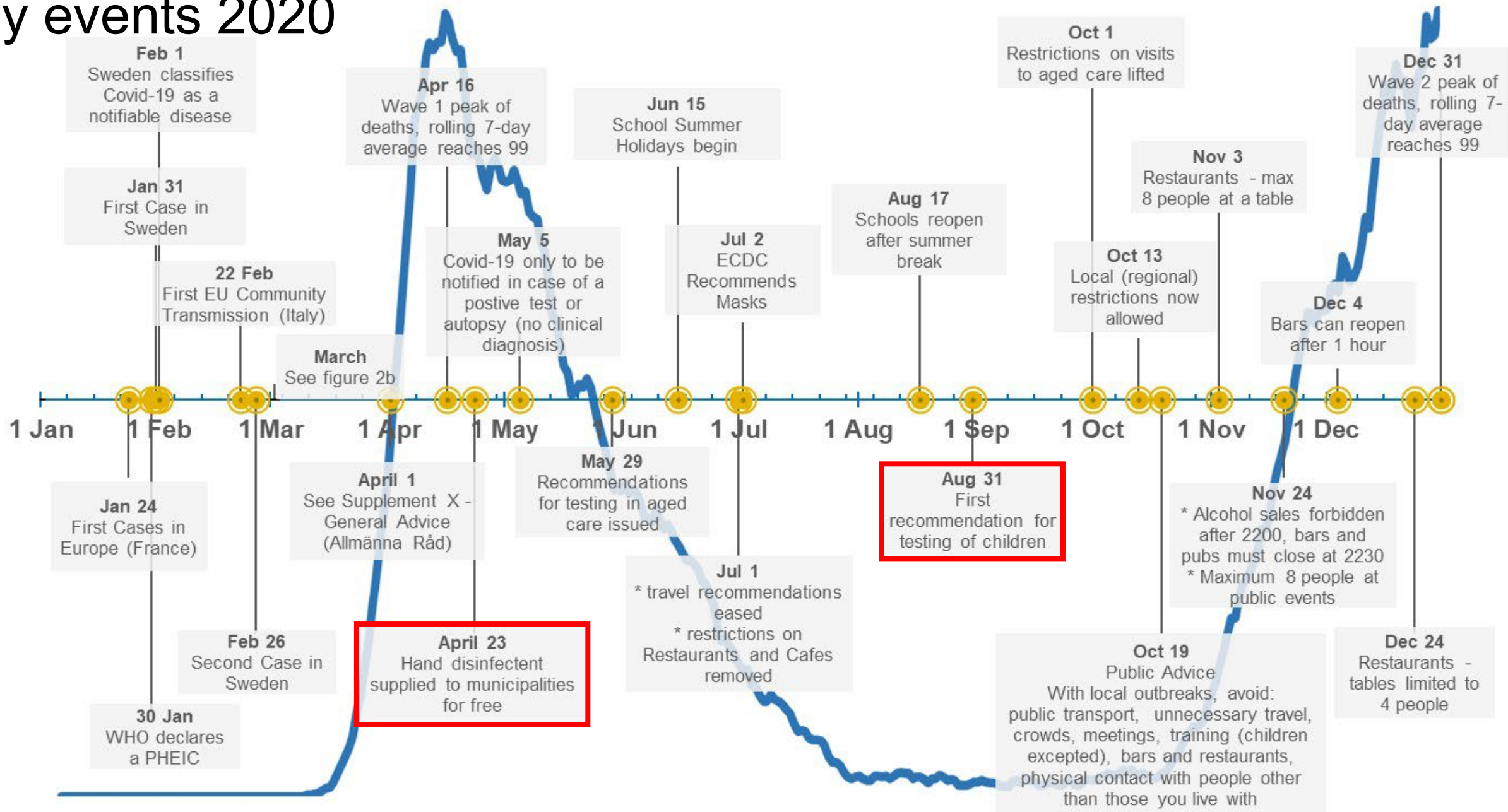


Key events March 2020

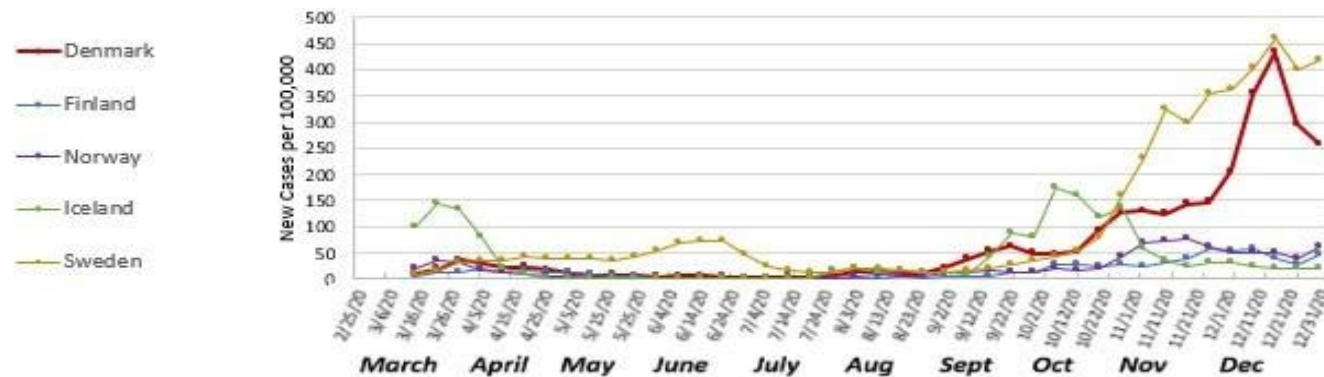


7 March Finals of Swedish Eurovision (Melodiefestivalen)
+-30,000 people

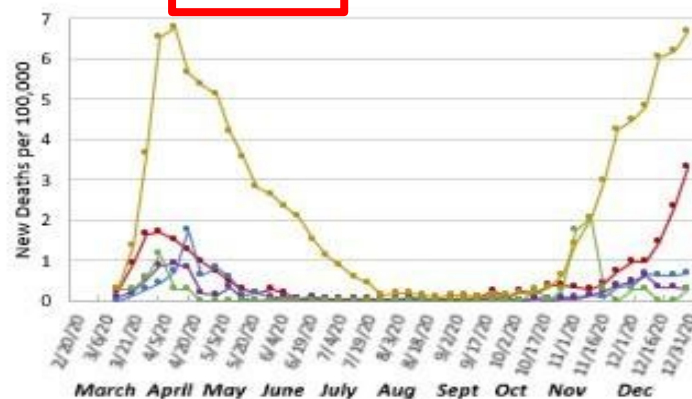
Key events 2020



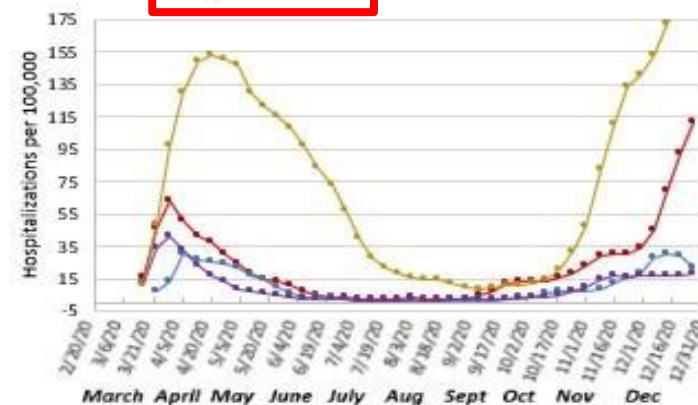
COVID-19 New Cases



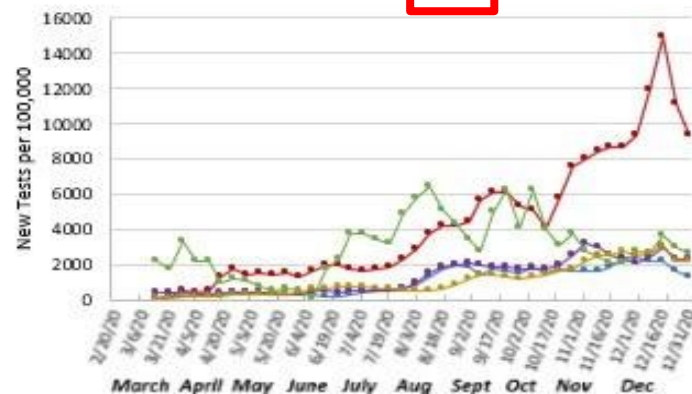
New Deaths with COVID-19



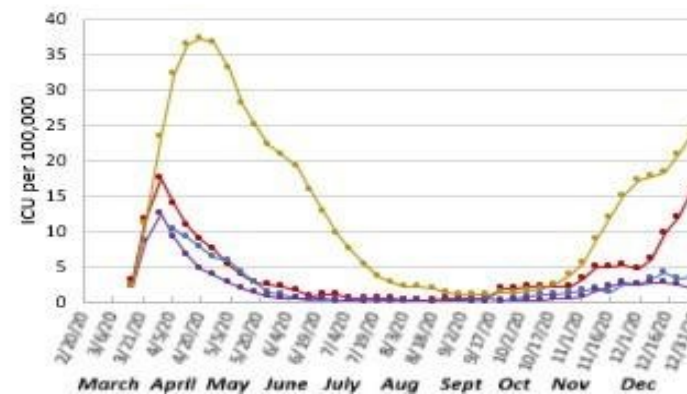
Hospitalizations with COVID-19



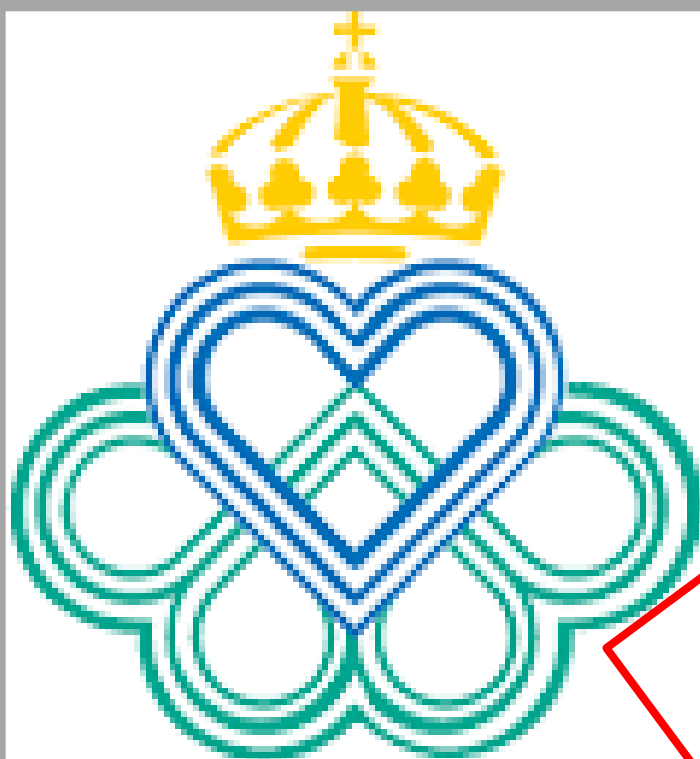
New COVID-19 Tests



ICU with COVID 19



”Scientific advice in Sweden”



Not independent of the
Government!

Folkhälsoinstitutet
PUBLIC HEALTH AGENCY OF SWEDEN



”Scientific advice in Sweden”



Swedish COVID-19 recommendations
(2020-21)

1. *Stay home when ill*
2. *Keep your distance*
3. *Wash your hands*



Key players in **Italy**

ARTICLE

<https://doi.org/10.1057/s41599-022-01042-6>

OPEN



Mobilization of expert knowledge and advice for the management of the Covid-19 emergency in Italy in 2020

Silvia Camporesi¹, Federica Angeli² & Giorgia Dal Fabbro³

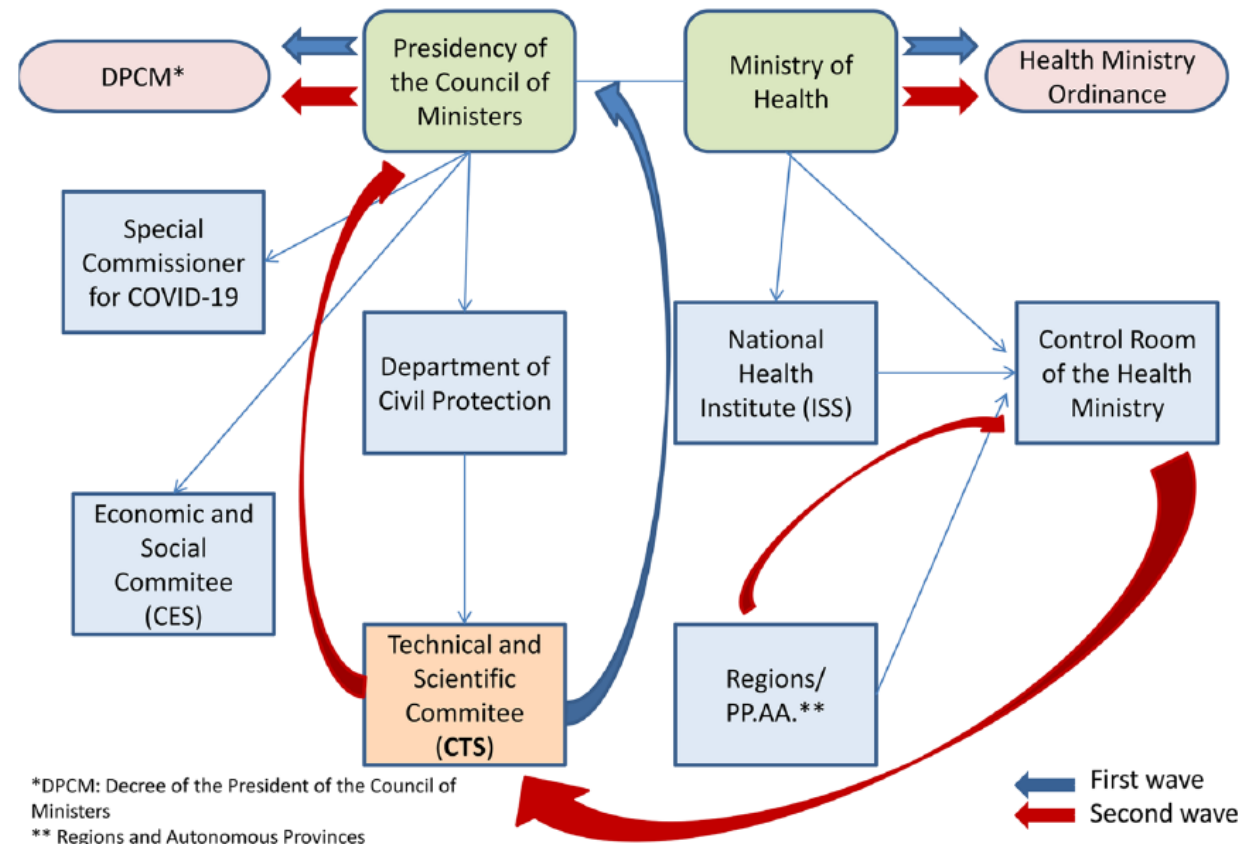


Fig. 3 Key players in the management of the Covid-19 crisis in Italy in the first and second wave in 2020. Diagram by GDF.

SVERIGES RIKSDAG



Regeringen



REGERINGSKANSLIET



Statistics Sweden



Swedish Civil
Contingencies
Agency



Swedish Association
of Local Authorities
and Regions



Karolinska
Institutet



UNIVERSITY OF
GOTHENBURG



KUNGL.
VETENSKAPS-
AKADEMIEN

THE ROYAL SWEDISH ACADEMY OF SCIENCES

Sverige under pandemin
Volym 1
Smittspridning och smittskydd

Corona Commission



Inspektionen för vård och omsorg

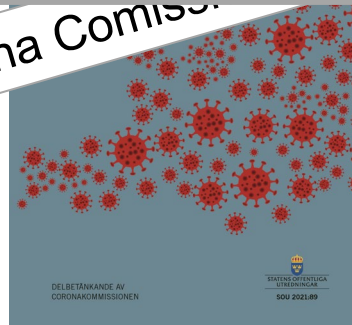
Health and Social Care
Inspectorate (IVO)



Folkhälsomyndigheten

PUBLIC HEALTH AGENCY OF SWEDEN

Corona Comiss



Inspektionen för vård och omsorg

**Health and Social Care
Inspectorate (IVO)**



Häng Tegnell i granen - så gör du personliga julpyrdnader!
 2020-11-29 • 2 min 40 sek
 Vad sägs om att hänga Anders Tegnell, Agnes Wold eller Emma Frans i granen som änglar?

FOTO: MALIN MÅNSSON

For Better Science
BY LEONID SCHNEIDER. ON RESEARCH INTEGRITY, BIOMEDICAL ETHICS AND ACADEMIC PUBLISHING.
ABOUT ME AND CONTACT SUPPORT MY SITE COMMENTS POLICY COVID-19 MACCHIARINI'S TRACHEA TRANSPLANT PATIENTS: THE FULL LIST SHUT CLYDE SCHNEIDER SHORTS

Swedish scientists call for evidence-based policy on COVID-19
Swedish academics Nele Brusselaers, Lynn Kamerlin and Pernilla Wittung-Stafshede react to COVID-19 pandemic and ask Swedish authorities: 'Yes, it is important to avoid panic - but is it not better to be over-prepared?'

Thousands of scientists in Sweden are criticizing the government for not implementing a lockdown to stop the coronavirus

SPOTLIGHT STORY WHAT THE TWITTER WHISTLEBLOWER SAID ABOUT SPAM BOTS

Mark Abadi and Robert Leslie Apr 1 **TIME**

The Swedish COVID-19 Response Is a Disaster. It Shouldn't Be a Model for the Rest of the World

A man wearing a protective mask walks next to travelers as they queue up to board a boat in Stockholm on July 27, 2020. Jonathan Nerikstrand—AFP/Getty Images

What Countries Require Public Mask Usage To Help Contain COVID-19?

September 2020

Updated 9/18



Map: Data from Masks4All • Source: [View Full Country Data](#) • [Get the data](#) • Created with [Datawrapper](#)



Only "recommended" from Jan 2021:

- In healthcare
- Public transport – during rush hour

<https://kellybjorklund.medium.com/the-swedish-governments-advice-on-masks-is-fake-news-in-the-rest-of-the-world-4ab3d524eac4>
<https://nyheter24.se/nyheter/inrikes/952572-har-aker-anderstegnell-tag-i-rusningstrafik-utan-munskydd>

Coronavirus Northern Ireland Political news Republic of Ireland Brexit UK News Healthcare news World news Civil Rights

Expert says Republic of Ireland should allow spread of Covid-19 among people under 60



SPECIAL COMMITTEE Strategic options for using the Government Plan to eliminate community transmission of Covid-19 in Ireland
COVID-19 RESPONSE

Sweden's former state epidemiologist, Professor Johan Giesecke, who has said that Ireland should allow a controlled spread of Covid-19 among people below the age of 60.

Cate McCurry, PA

Support the Guardian
Available for everyone, funded by readers
Contribute → Subscribe →

Search jobs Sign in Search The Guardian News website of the year International edition

News Opinion Sport Culture Lifestyle More

World Europe US Americas Asia Australia Middle East Africa Inequality Global development

Sweden

This article is more than 2 years old

Sweden's Covid-19 strategist under fire over herd immunity emails

Anders Tegnell appears to have asked if higher death rate for older people might be acceptable

Our Mission

UnHerd

Subscribe

Interview

Why we aren't wearing masks in Sweden

Anders Tegnell, architect of a unique response to the pandemic, defends his approach

BY FREDDIE SAYERS



DI WEEKEND

Giesecke: "Alla andra länder gör fel"

Den tidigare statsepidemiologen Johan Giesecke räknar med att Sverige återgår till ett mer normalt läge i slutet av maj.
"Det är en magkänsla jag har", säger han.

Uppdaterad: 8 april 2020, 08:27 Publicerad: 3 april 2020, 13:03

Karin Grundberg Wolodarski Text



Di Weekend har ätit frukost med den tidigare statsepidemiologen Johan Giesecke. Foto: Joey Abrait

HOME > NEWS > SCIENCEINSIDER > CRITICS SLAM LETTER IN PRESTIGIOUS JOURNAL THAT DOWNPLAYED COVID-19 RISKS TO SWEDISH SCHOOLCHILDREN

SCIENCEINSIDER | EUROPE

Critics slam letter in prestigious journal that downplayed COVID-19 risks to Swedish schoolchildren

Researchers omitted data suggesting child mortality went up in the spring of 2020

Svenska Dagbladet Nyheter Näringsliv Kultur Ledare Debatt eSvD

Nyheter Sverige Världen Politik Sport

Regeringen saknade formell coronastrategi



The government did not have a formal strategy

AFTONBLADET

ONSDAG 24 AUGUSTI 2022

Dagens namn: Bartolomeus

START VALET SPORT PLUS TV NÖJE TIPSÅ KULTUR LEDARE

Coronapandemin

”Tror inte på ett stort utbrott i Sverige”

Folkhälsomyndigheten och Socialstyrelsen om coronaviruset

Av: Nivette Dawod, Hanna Olsson Berg

PUBLICERAD: 26 FEBRUARI 2020 | UPPDATERAD: 26 FEBRUARI 2020

”I don’t think there will be a big outbreak in Sweden”

Svenska Dagbladet Nyheter Näringsliv Kultur Ledare Debatt eSvD

Logg

Nyheter Sverige Världen Politik Sport

Coronaviruset i Sverige

Tegnell pausar svensk insamling av coronadata



Tegnell pauses Swedish collection of corona-data

Business
Prognosis

Subscriber Only

Sweden’s Covid Workers Are Quitting in Dangerous Numbers

The Ethics of Covid-19 Vaccination

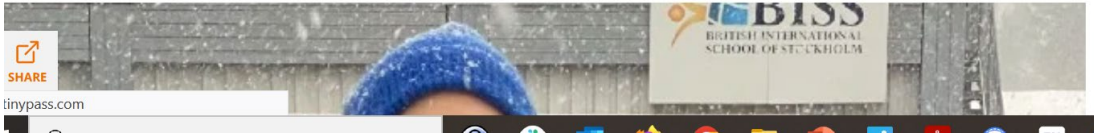
Most Read

NEWSLETTER

Stockholm school sends pupil home for wearing face mask

UPDATED: A mother has told The Local her 13-year-old son was banned from attending classes at an international school in the Stockholm region until he agreed to remove the mask he was wearing. She is now complaining to the local municipality.

Published: 11 March 2021 17:35 CET
Updated: 15 March 2021 07:06 CET



Sweden's news in English

THE LOCAL **se**

News Politics Sweden in Focus Practical tips Learn about Sweden Property Job



HOSPITALS

Covid-19 forces Swedish hospitals to delay ‘necessary surgery’

Hospitals across Sweden are now postponing urgent operations to make room for

Coronavirus: What's going wrong in Sweden's care homes?

By Maddy Savage
BBC News, Stockholm

🕒 19 May 2020



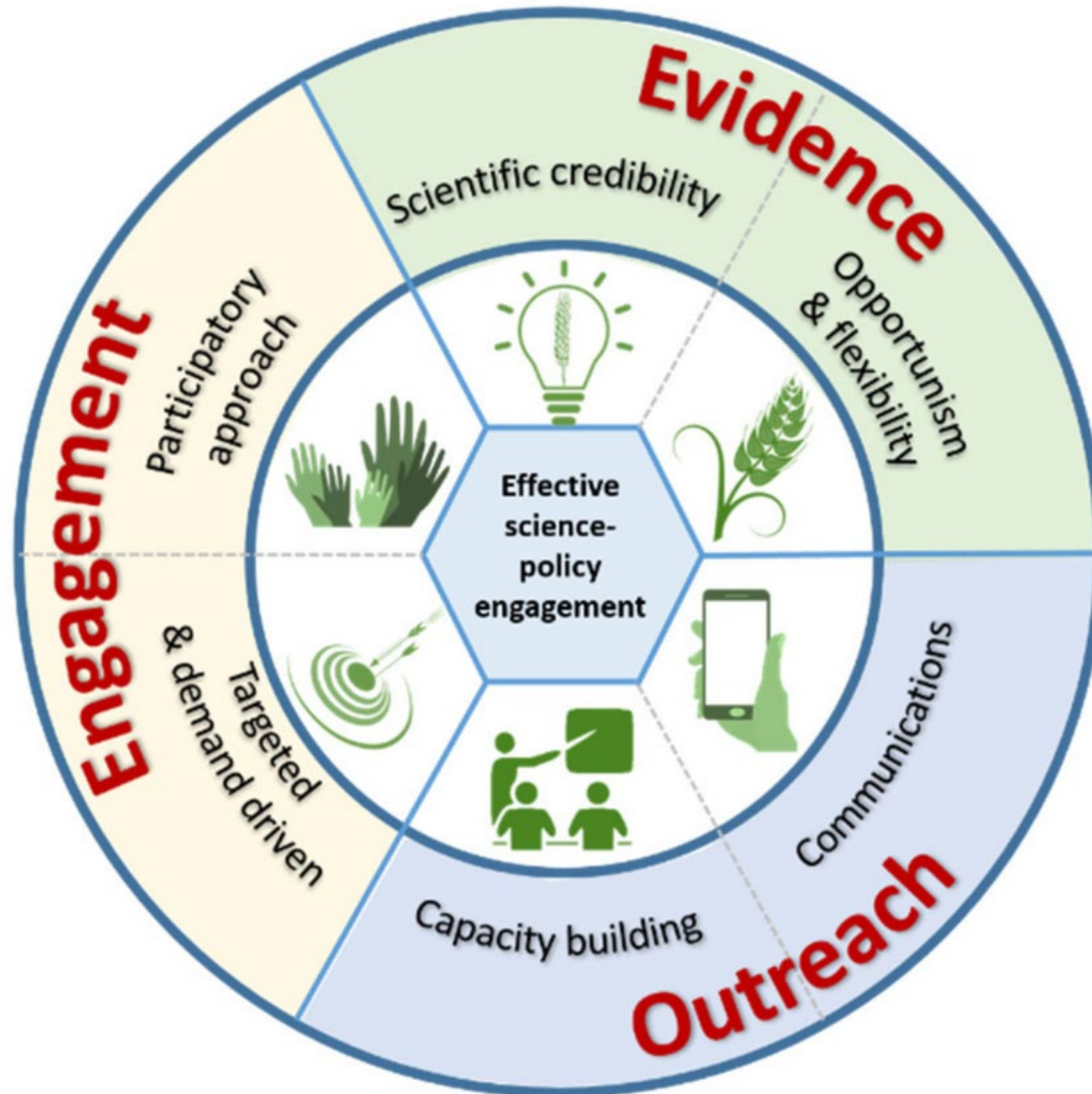
What I think was worst

- **The elderly homes**: morfine instead of oxygen without clinical exam
- The **healthcare workers** not being allowed to protect themselves
- **Schools**: Parents and teachers not being informed about outbreaks; mandatory school-attendance for everyone
- **Communication**: Wrong/misleading information from officials,
also affecting **global pandemic response**
- **Polarised climate**: "Public Health Agency should not be questioned"
- "It is only the **foreigners**": who got ill, who died, who brought it into elderlycare...

How to implement science in pandemic-policy making?

- **Multidisciplinary** discussions and decision making
 - Not only ID specialists and epidemiologists! Also social scientists, economists, ethics, ...
- **Communication!**
- **Reliability:** national and international sources
- **Responsibility:** Consider different stake holders, subpopulations
- **Adaptability:** Accept and learn from mistakes and new knowledge, and be flexible to adapt

How Science-Policy engagement can facilitate change...



Article

Facilitating Change for Climate-Smart Agriculture through Science-Policy Engagement

Dhanush Dinesh ^{1,*} , Robert B. Zougmore ² , Joost Vervoort ³, Edmond Totin ^{2,4} , Philip K. Thornton ⁵, Dawit Solomon ⁵, Paresh B. Shirsath ⁶ , Valerien O. Pede ⁷, Isabel Lopez Noriega ⁸, Peter Läderach ¹, Jana Körner ¹ , Dries Hegger ³ , Evan H. Girvetz ¹, Anette E. Friis ⁹, Peter P. J. Driessen ³ and Bruce M. Campbell ^{1,9}

Conclusion

- Official and "Shadow" scientific advice
- Scientific advice independent of the government/politics
- Scientific information, knowledge and understanding are crucial
- Policy making vs. Science -> collaboration/communication are crucial
- Importance of diverse expertise, coordination and leadership

Thank you!

